

SEE THE GRAND BLANC TOWNSHIP  
SANITARY SEWER CONSTRUCTION  
STANDARD DETAILS FOR REVISIONS  
TO THESE DETAILS.

NO.	DATE	DESCRIPTION
1	2020	EIGHTH EDITION

## DIVISION OF WATER & WASTE SERVICES

# SANITARY SEWER CONSTRUCTION

STANDARD DETAILS  
For the Construction of Sanitary Sewers & Watermain in Genesee County

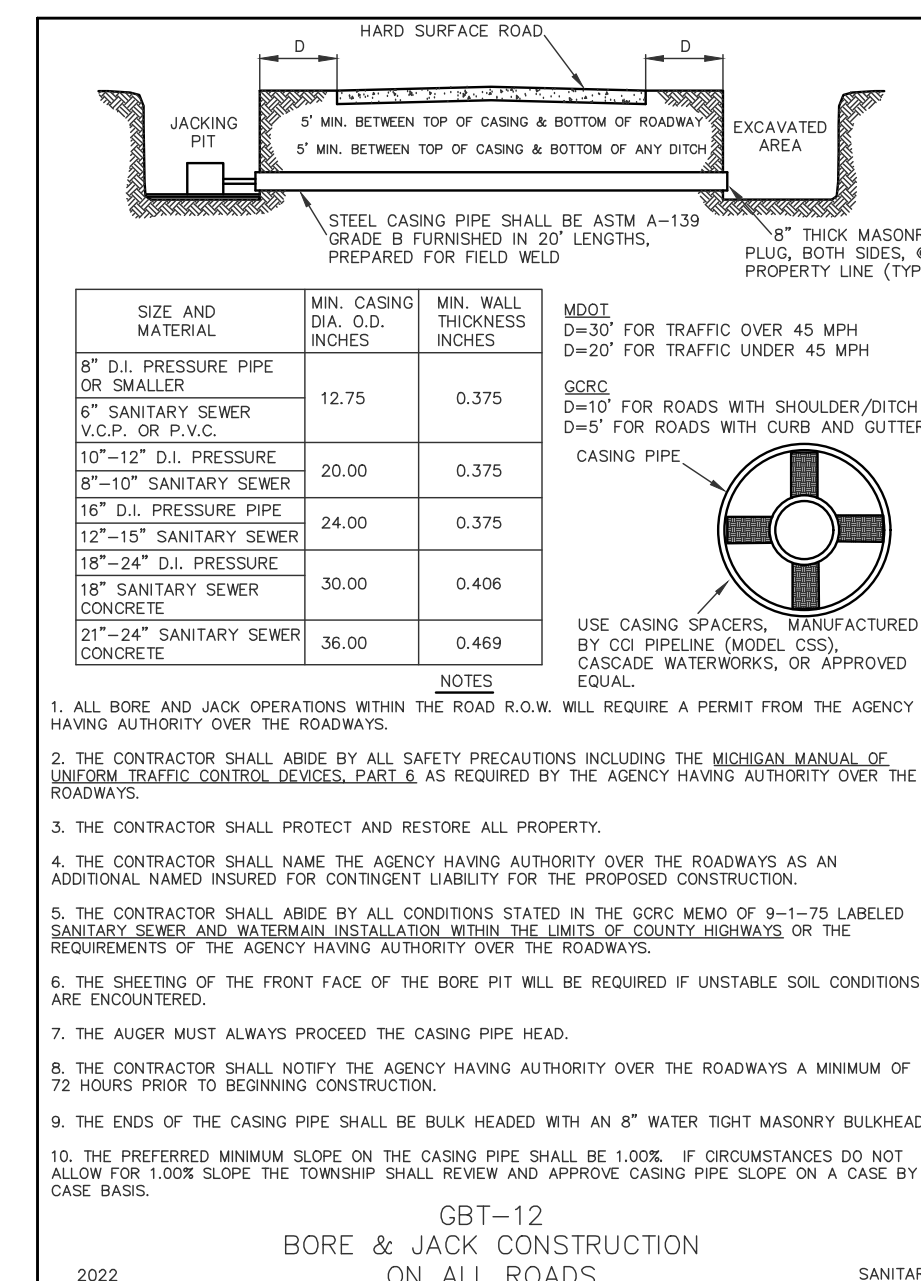
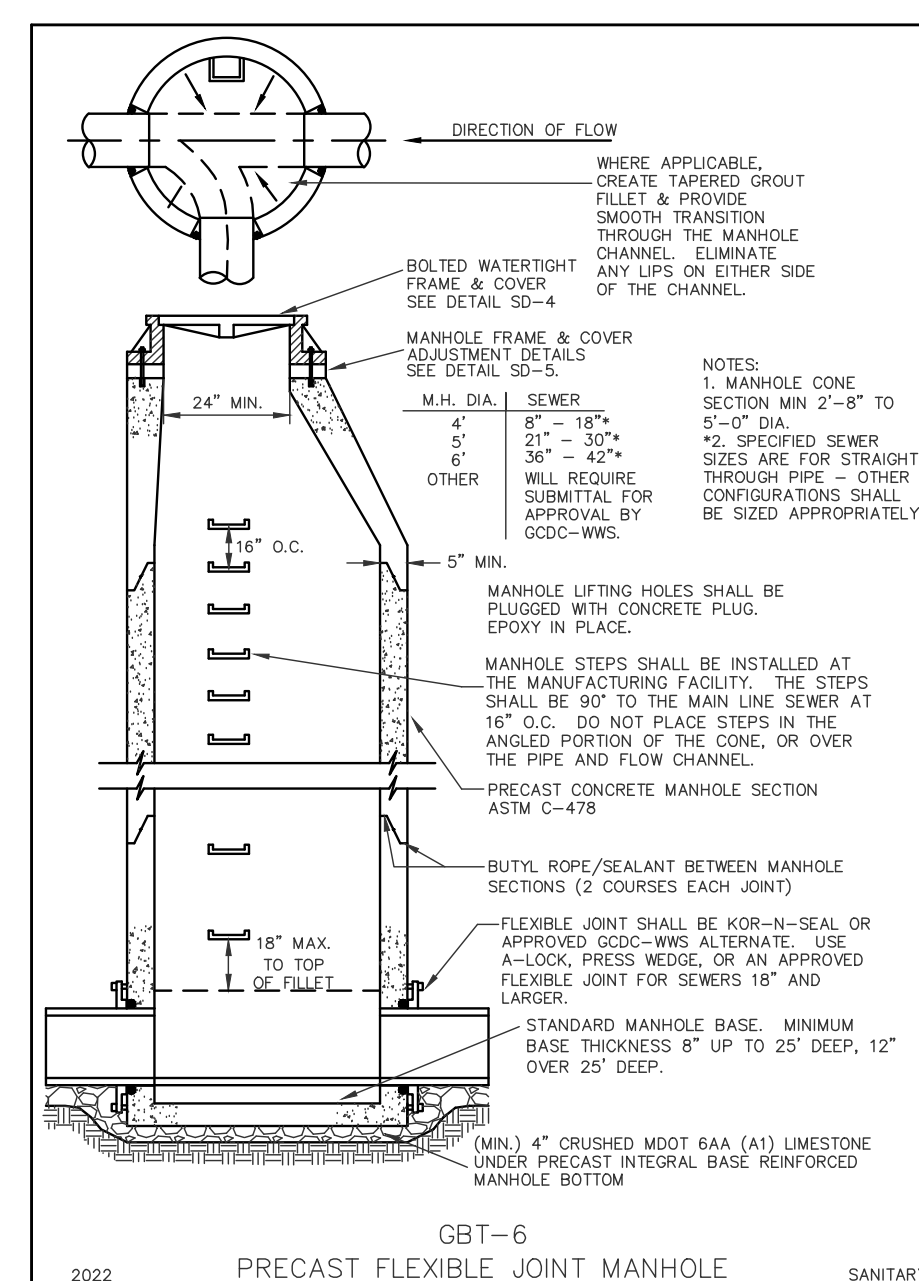
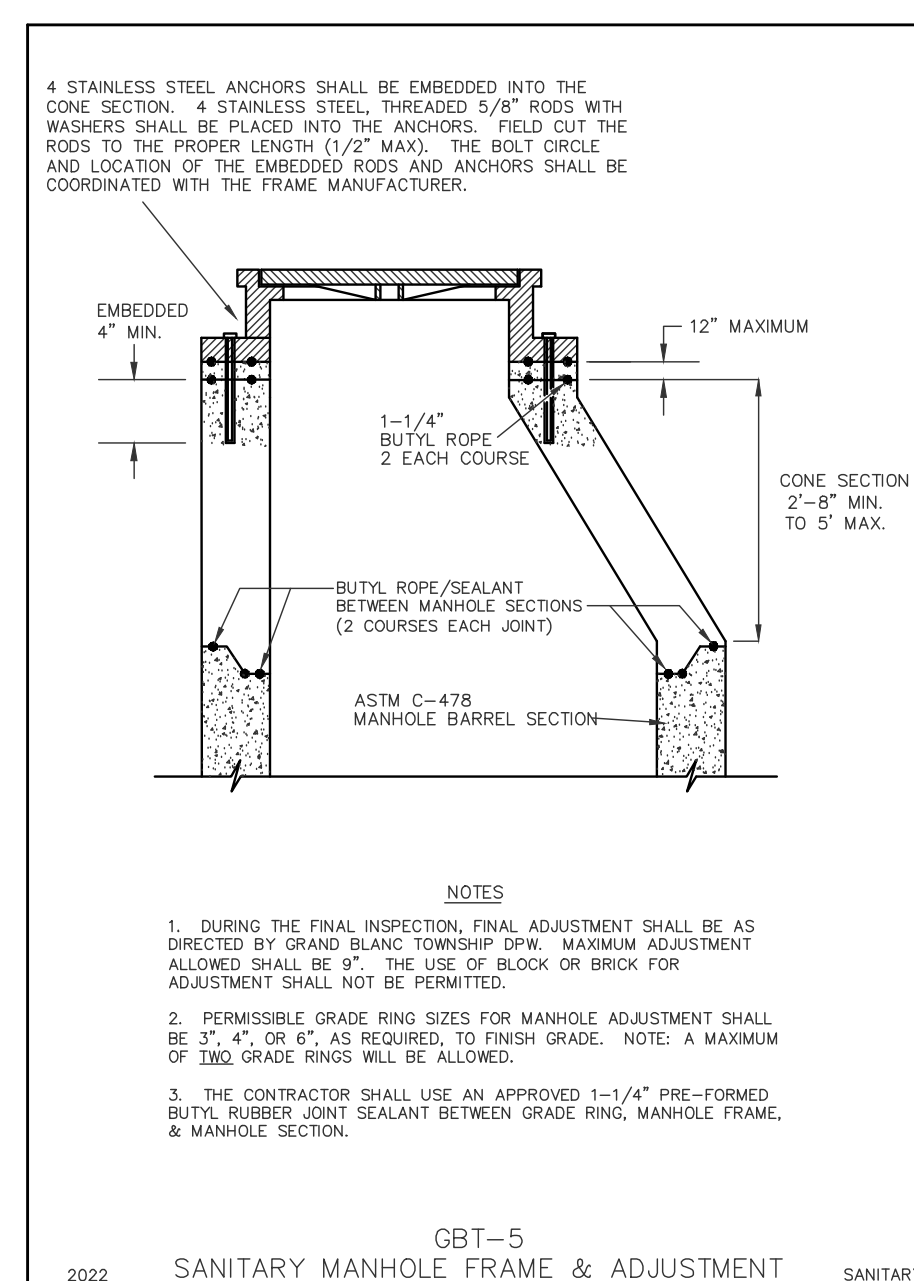
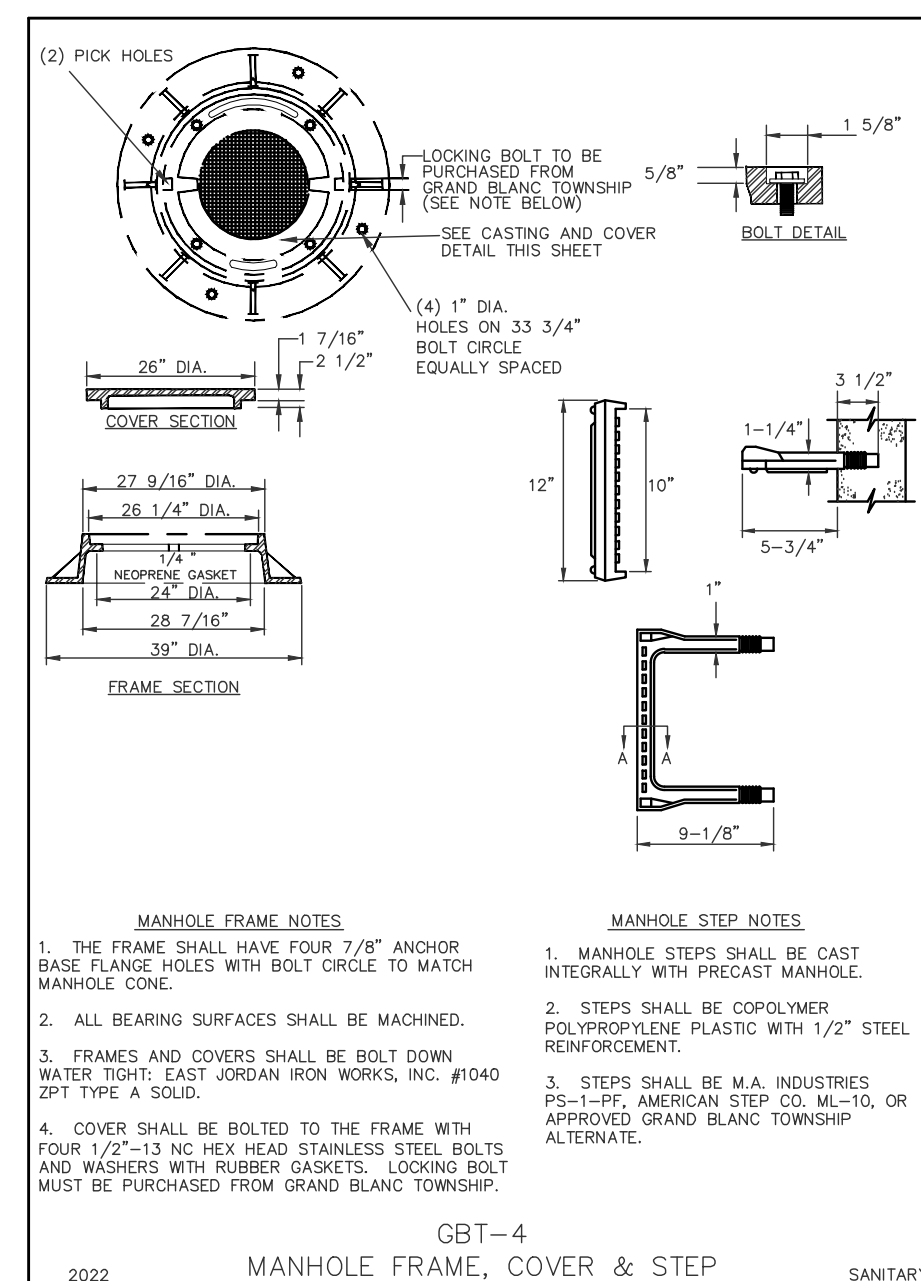
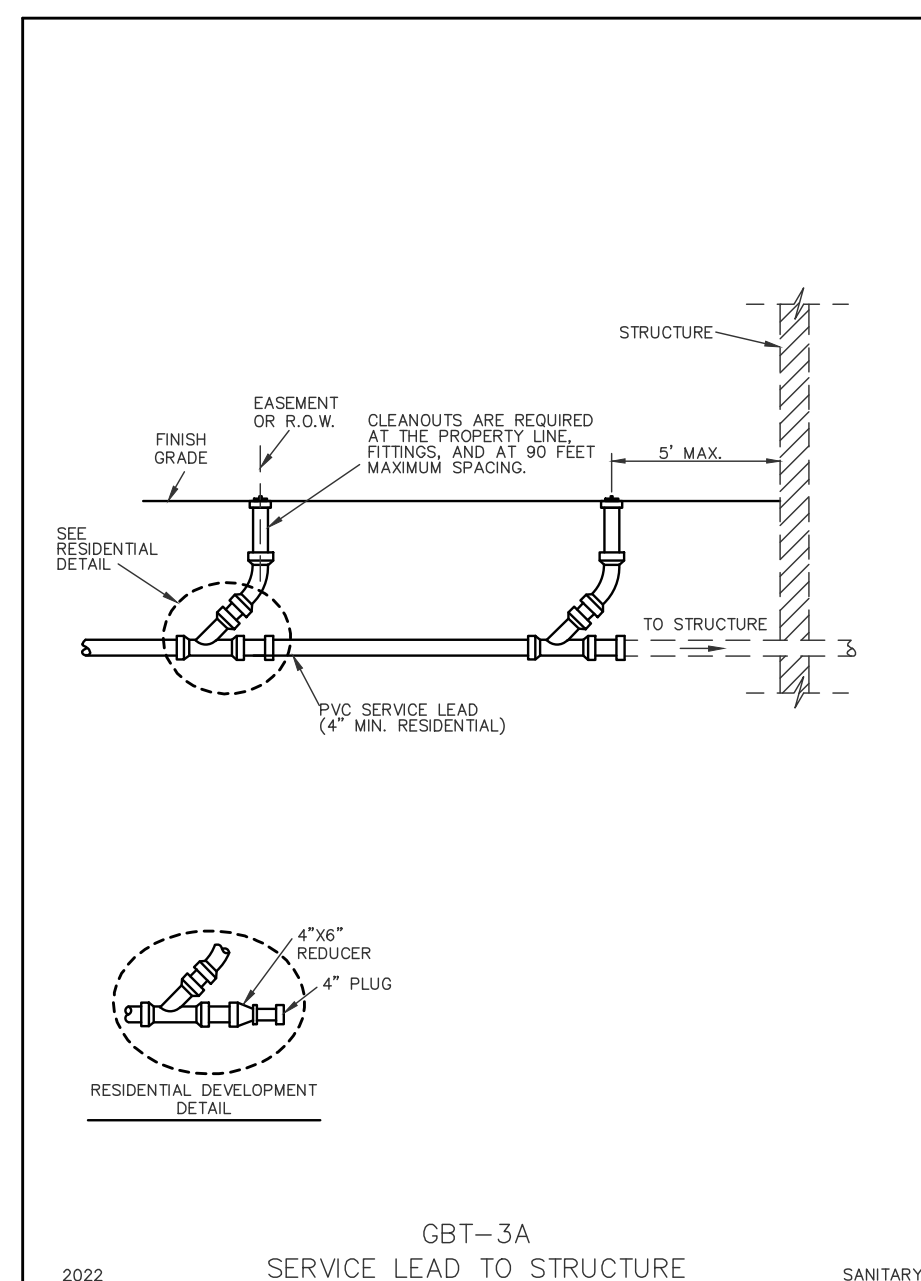
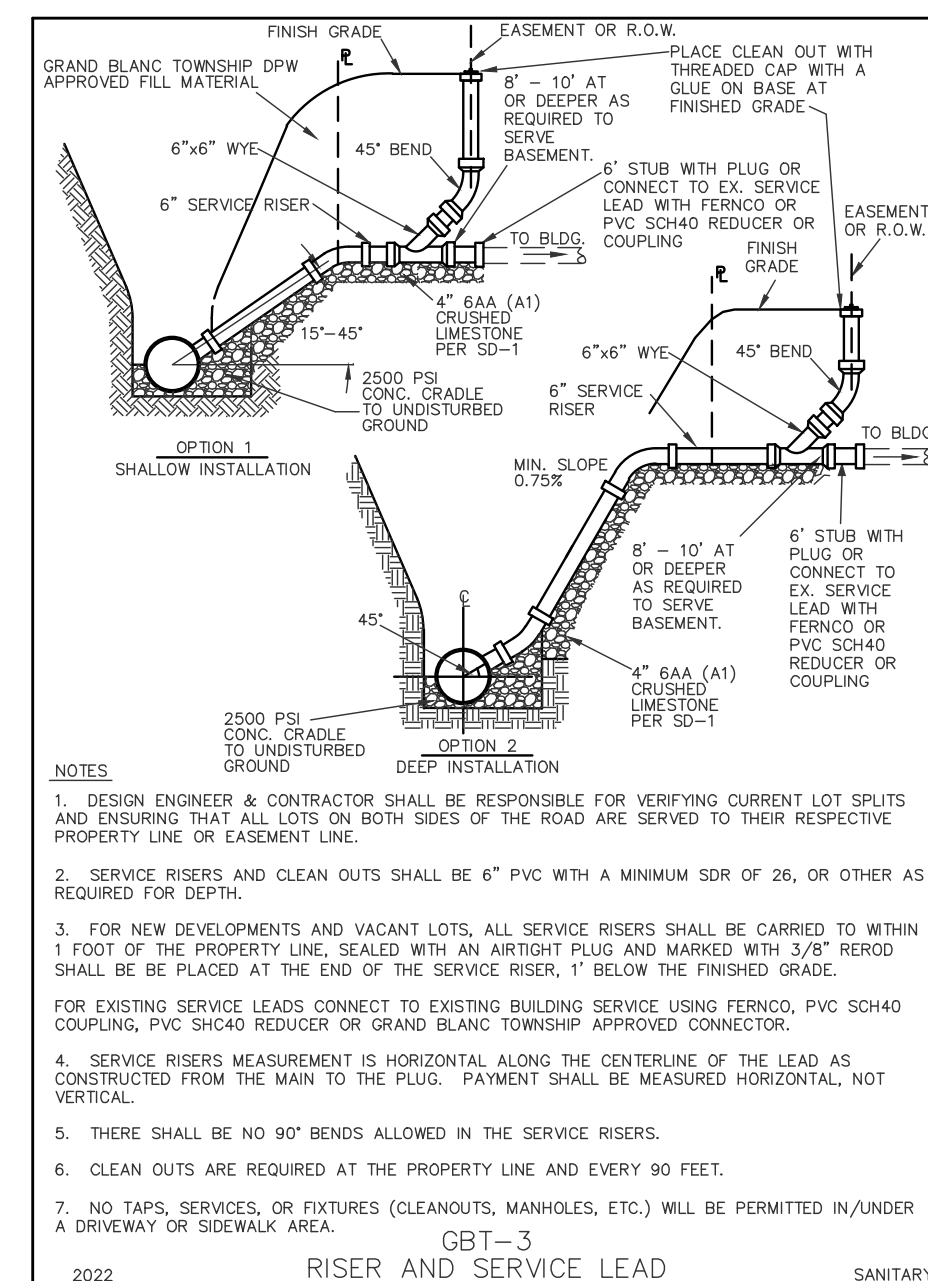




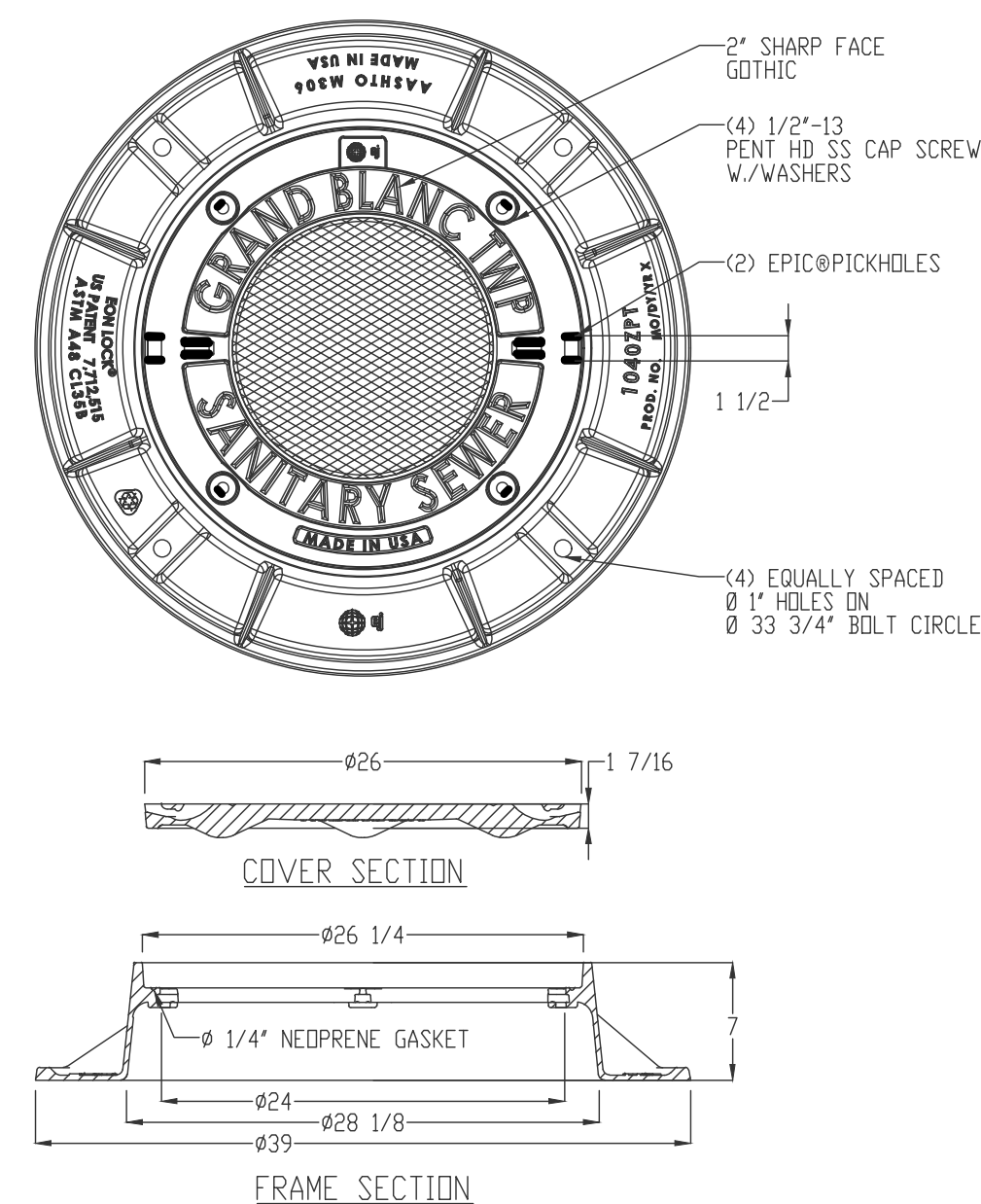





THE FOLLOWING DETAILS REPLACE THE VOIDED DETAILS ON THE GCDC-WWS STANDARD DETAILS.



1040ZPT 1040APT Assembly



 **ej**

Product Number  
0010406

Design Features

- Materials  
Frame (Gray from 13.358)
- Cover (Gray from 13.358)

- \*Design Load  
- Heavy Duty  
- Open Area

- \*Coating  
- \*Lipped

- ✓ \*Designates Machined Surface

Certification

-

-

- \*Country of Design: USA

Major Components

0010406  
0010492

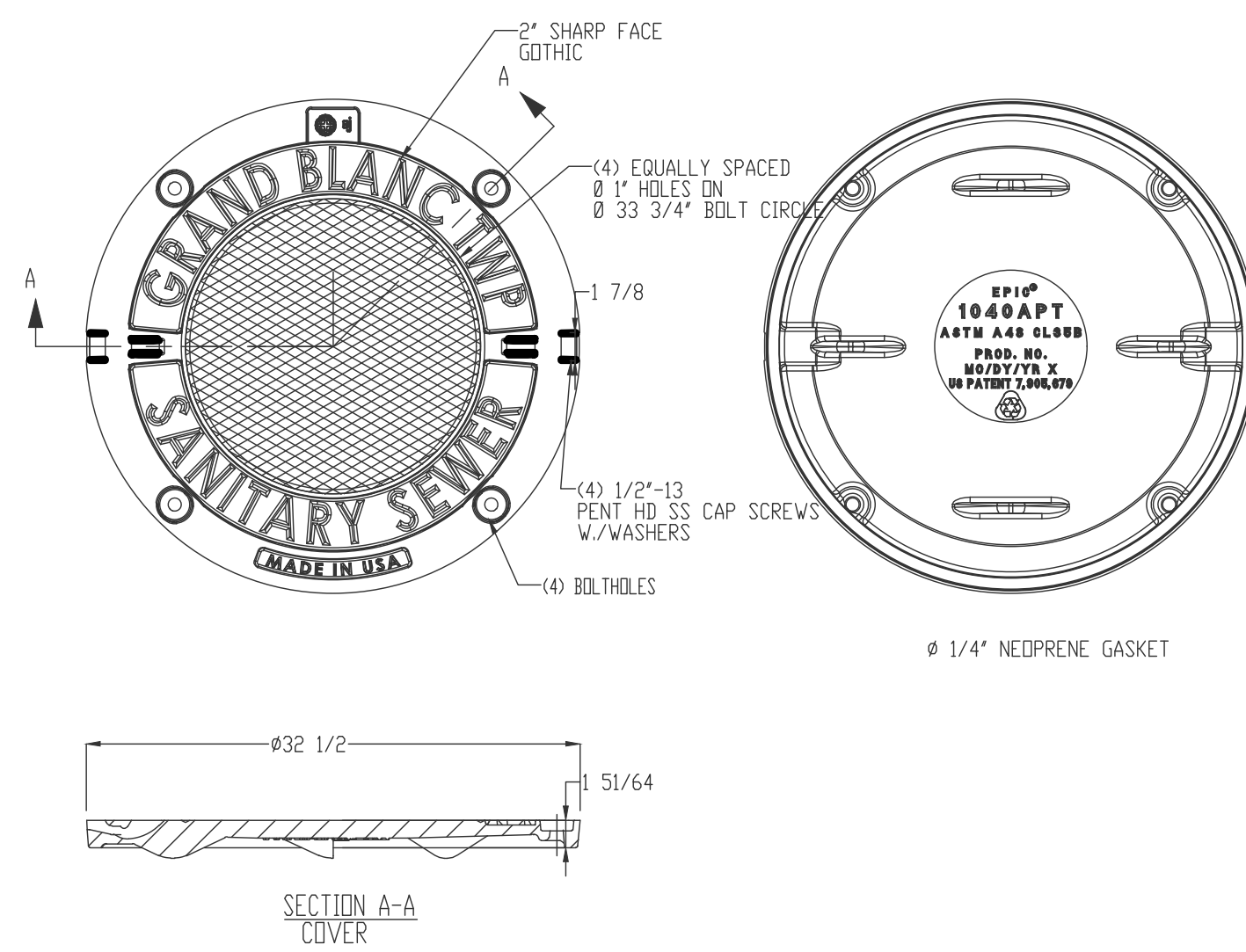
Drawing Revision  
01/02/05 Revison  
08/02/03 Revised By: DWS

Disclaimer  
Weights, dimensions, finishes, drawings, and/or drawings listed for your guidance reserve the right to modify specifications at any time.

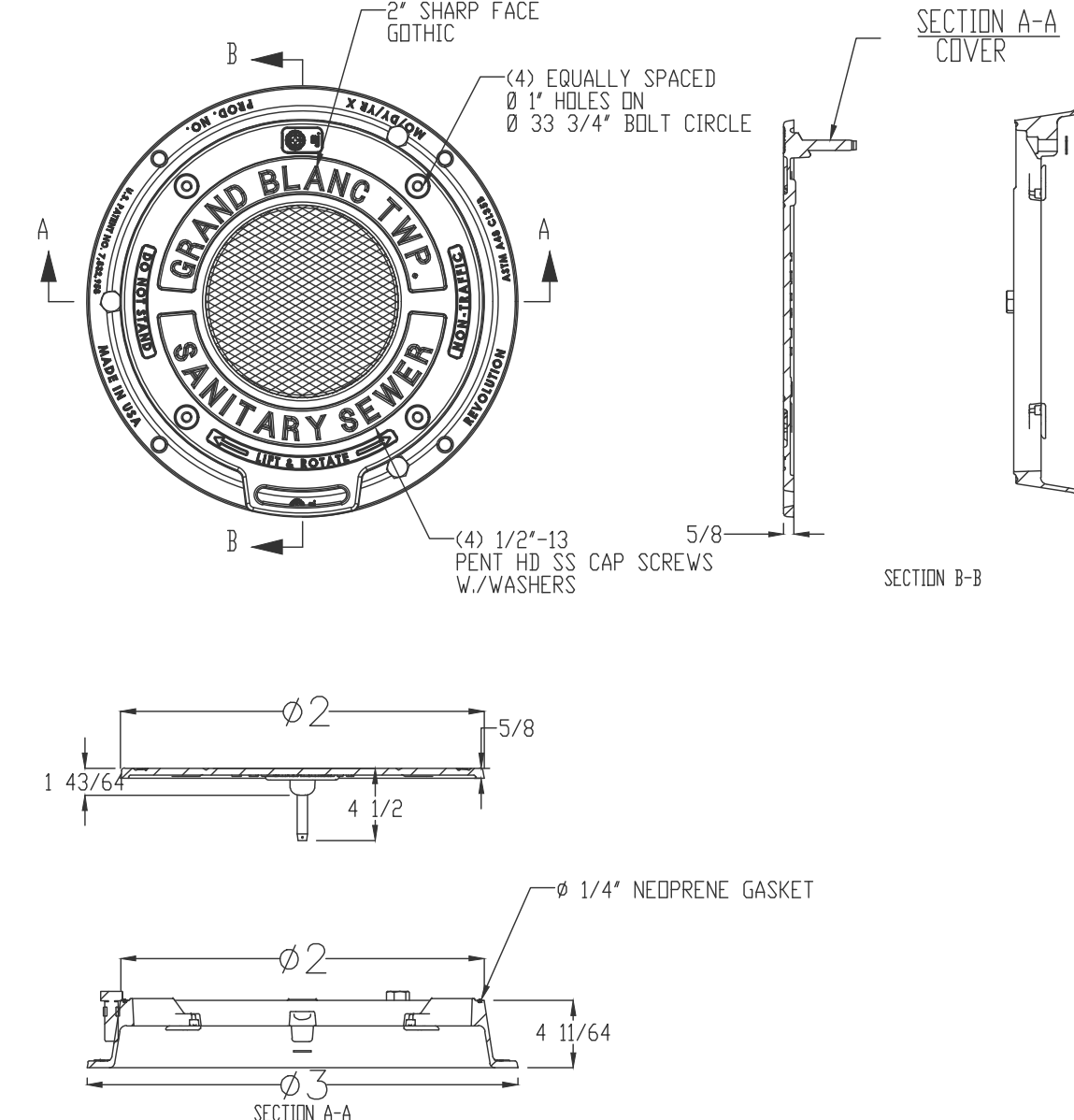
**DISCLAIMER:** This drawing is the property of the design engineer. It is not to be reproduced, registered, mass produced, traded, stored or sold without approval from the property of the design engineer. © 2005 E.J. Iwerks, Inc.  
All rights reserved.


Contact  
EJ Iwerks  
634.553  
e.j.iwerks.com

## 1040APT Cover

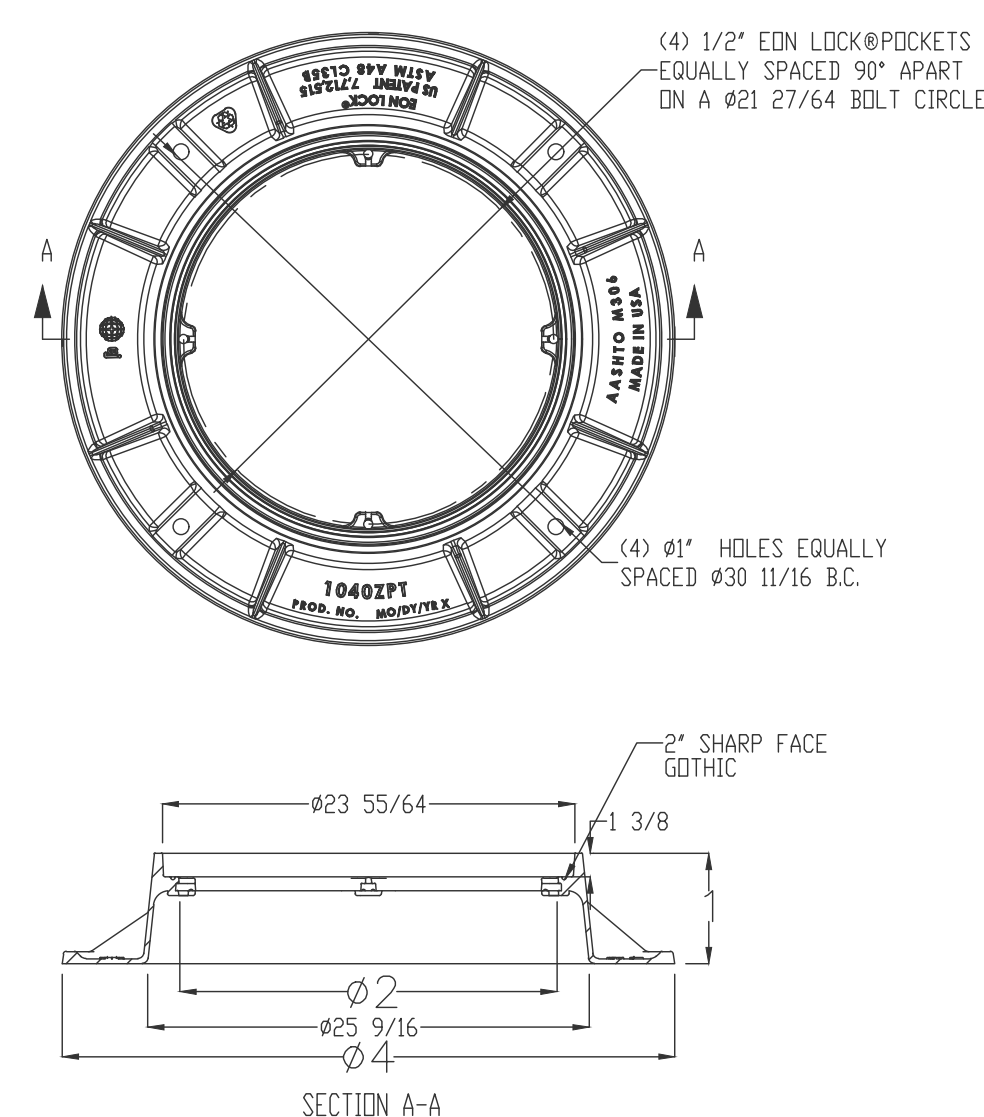




REVOLUTION Assembly




  
 Product Number  
 00104076R01  
 Design Features  
 -Materials  
   Cover  
     Gray Iron (L335B)  
   Frame  
     Gray Iron (L335B)  
 -Load Rating  
 -Non-Traffic  
 -Open Area  
   n/a  
 -Coating  
   Dipcoat  
 ✓ Designates Machined Surface  
 Certification  
 -  
 -Country of Origin USA  
 Major Components  
 R00104076  
 RZ140053208  
 Drawing Revision  
 10/17/2019 Designer: MMH  
 11/9/2018 Revised By: MMH  
 Disclaimer  
 Weights, thickness, dimensions, materials and drawings provided for your reference. We warrant that the information is accurate to the best of our knowledge. Any specifications without prior notice.  
 Eaton and the Eaton logo are the property of E.I. Group, Inc. and modules, confidential information, registered patents, trademarks, trade secret information, proprietary software that is the property of E.I. Group, Inc. are trademarks.  
 Contact  
 800 626 4653  
 eja.com

## 1040ZPT Frame



Product Number  
60104011

Design Features

- Materials  
  Gray Iron (CL538)
- Design Load  
  Heavy Duty
- Open Area  
  n/a
- Coating  
  n/a

✓ Designates Standard

Certification

- 
- 
- Country of Origin USA

Drawing Revision

6/5/2008 Designer: JJJ  
2/22/2016 Revised BY:ME

McClachler  
360.526.1633  
ej@ejgroup.com

CONFIDENTIAL: This drawing is the property of EJ Group, Inc. and contains confidential information. It is to be used only for the project and/or information stated. It is the property of EJ Group, Inc. and is not to be distributed outside of EJ Group, Inc. All Rights reserved.

Contact

Weights (each), dimensions (each) and materials provided for your guidance. In response, the right to modify specifications without

SANITARY SEWER FRAME AND COVER NOTES:

1. LOCKING BOLT TO PURCHASED FROM GRAND BLANC TOWNSHIP. BOLT SHALL BE MCGARD INTIMIDATOR.
2. REVOLUTION ASSEMBLY FRAME/COVER SHALL BE USED IN NON-TRAFFIC APPLICATIONS WHEN THE ELEVATION DIFFERENCE BETWEEN THE TOP OF THE COVER AND EXISTING GRADE IS GREATER THAN OR EQUAL TO 18 INCHES.

NO.	DATE	DESCRIPTION
	2022	PER GRAND BLANC TOWNSHIP REQUIREMENTS

GRAND BLANC TOWNSHIP  
DEPARTMENT OF PUBLIC WORKS

# SANITARY SEWER CONSTRUCTION

# STANDARD DETAILS

for the Construction of Sanitary Sewers & Watermain in Grand Blanc Township

